

Creating a GPRS Internet connection on Pocket PC 2003 / 2005 Phone Edition

From the Home screen tap on Start and select **Settings**



Tap on the **Connections** tab at the bottom of the screen



Tap on the **Connections** icon



To set up or change connection information, tap one of the following links.

My ISP

[Add a new modem connection](#)

My Work Network

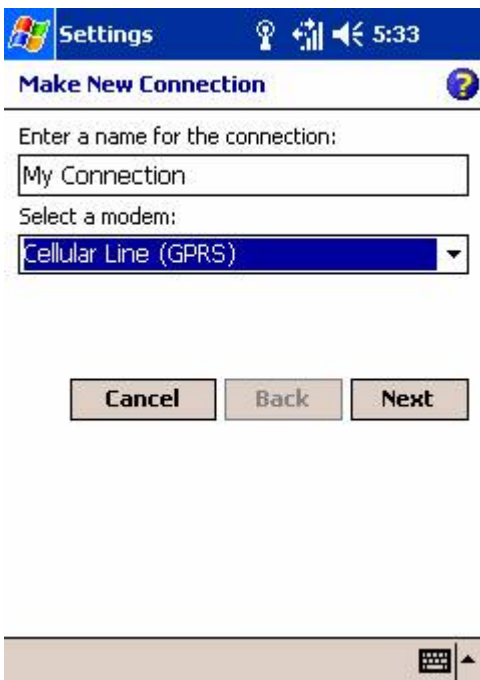
[Add a new modem connection](#)

[Add a new VPN server connection](#)

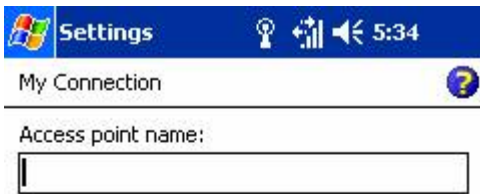
[Set up my proxy server](#)



Select the option to **Add a new modem connection**



Enter a name for the connection and select **Cellular Line (GPRS)** from the list of modems. Tap **Next**



Enter the Access Point Name (APN) for your GPRS service provider:

- Orange** orangeinternet
- Vodafone** internet
- O2** mobile.o2.co.uk
- T-Mobile** general.t-mobile.uk

and tap **Next**



Enter your user name and password details:

- Orange** leave blank
- Vodafone** use "web" for both
- O2** use "web" for both
- T-Mobile** leave blank

Leave the Domain field blank.

then tap **Finish**

Your connection has now been created.